

ASEC Aartech Steel ENGINEERING CO



Stockist & Suppliers of :

Stainless Steel
Carbon Steel
Mild Steel
Aluminum, Brass, Copper
& All type of Industrial Raw Materials.

Manufactures of:

Stainless Steel But weld Fittings
Stainless Steel Dairy Fittings
Stainless Steel Flanges
Stainless Steel Fasteners

RESPECTED CUSTOMER

Sub. : Registration of Our Firm in your approved list of vendors for Suppliers of all types of Ferrous & Non-Ferrous Metals.

We Interdicted this moment to present ourselves as one of the leading and largest importers, Stockiest and Suppliers of all types of Ferrous and Non-Ferrous Metals, We are also Manufacturers of Stainless Steel Pipes in all Grades Shapes and Sizes.

We have technical know-how in this trade and are well versed in project and maintenance suppliers to various organizations in CHEMICALS, FERTILIZERS, PETROCHEMICALS, NUCLEAR POWER, THERMAL POWDER, CEMENT, PAPER, REFINERS, etc. Catering towards their requirements, on a repeat order basis, in their various manufacturing cum production programmers, with our display of quality products on convenient terms.

Any Registration formalities to be fulfilled, Please feel free to correspond, it not only be our pleasure but due respect in doing so, waiting for the opportunity of serving your prestigious firm in times to come.

Thanking You And Assuring Of Our Time-Bound Services, At All Times.

For, **AARTECH STEEL ENGINEERING CO**



ORGANISATION SETUP

Company Name	:	AARTECH STEEL ENGINEERING CO
Regd. Office	:	Shed No. 30, Aartech Steel House, Adarsh Ind. Estate, Opp. Gravity Kanta, Chakudia Mahadev Road, Rakhial, Ahmedabad - 380 023 Gujarat
Mob.:	:	9727 657146
Email	:	aartechsteel@gmail.com / info@aartechsteel.com
Website	:	www.aartechsteel.com
Activities	:	Pipe, Sheet, Plate, Coil, Round, Square, Hex bar, Wire, Angle Channel, Pipe Fittings, Flanges, Valves & All type of Industrial Raw Materials and Hardware Items.
GSTIN	:	24ALTPC6053D2Z9
Pan No.	:	ALTPC6053D
Board of Proprietor	:	Laxman Patel
Contact Person	:	Laxman Patel +91 97276 57146 Vineet Patel +91 99827 66250
Bank	:	Kotak Mahindra Bank
Branch	:	Rakhial, Ahmedabad
IFSC Code	:	KKBK0002610
A/C No.	:	9915071986
Items Imported/ Stocked	:	As per our Stock Trade List
Manufacturers	:	As per List
Testing Facility	:	At Outside Govt. Approved Lab
Inspection	:	Any Third Party
Head Office	:	Mumbai
Branch	:	Dahej (Bharuch)

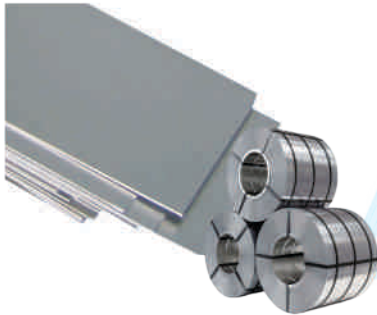
PRODUCT RANGE



PIPES & TUBES :

Grade	: 304, 304L, 304H, 316, 316L, 316H, 316Ti, 321, 309, 310, 347, 409, 410, 420, 430, 904L etc.
Types	: Round, Square, Rectangular
ASTM	: SA 312, SA 213, SA 249, SA 269, SA 270 etc.
Sizes	: 1/4" NB - 24" NB (Seamless) 1/4" NB-48" NB (ERW)
Thickness make	: SCH 5S, SCH 10S, SCH 20S, SCH 40S, SCH 80S, SCH 120S, SCH 160S, SCH XXS
Nickel Alloys	: Monel, Inconel, Hast Alloy, Nickel, Cupro Nickel, Titanium, Duplex, Super Duplex etc.

SHEETS, PLATES & COILS :



Grades	: 304, 304L, 304H, 316, 316L, 316H, 316Ti, 321, 309, 310, 347, 409, 410, 420, 430, 904L etc.
Types	: Foils, Shims, Chequered Plate, Perforated Sheet, Strips, Etc.
Finish	: HR, CR, 2D, 2B, Satin, Matt, PVC Coated etc.
Thickness	: 0.1 mm to 125mm
Sizes	: Any size as per customer requirement up to 2500 mm width is possible
Make	: Jindal, Sail, Imported
Nickel Alloys	: Model, Inconne, Hastalloy, Nickel, Cupro Nickel, Titanium, Duplex, Super Duplex etc.

BUTTWELD FITTINGS :



Types	: 45°, 90° & 180° Elbow & Bends, Equal Tee & Un Equal Tee, Short & Long Neck Stuband, Concentric & Eccentric Reducers, Pipe End Caps, Cross etc.
Stainless Steel	: ASTM A403 Wp304, 304L, 304H, 316, 316L, 316Ti, 321, 309, 310, 347, 904L etc.
Carbon Steel	: ASTM A234 WPB
Alloy Steel	: ASTM A234 WP1, WP5, WP9, WP11, WP22, Wp91
Dimension	: ANSI B16.9, MSS SP-43
Size	: 1/4" NB - 24" NB (Seamless) 1/4" NB-48" NB (ERW)
Thickness	: SCH 5S, SCH 10S, SCH 20S, SCH 40S, SCH 80S, SCH 120S, SCH 160S, SCH XXS
Nickle Alloys	: Model, Inconel, Haslloy, Nickel, Cupro Nickel, Titanium, Duplex, Super Duplex, Etc.

FLANGES :



Types	: Slip-on, Blind, Lap Joint, Loose, Screwed, Socket Weld, Weld Neck, Orifice, Spectacle Blind. Threaded etc.
Flange Facing	: Raised Face, Flat Face, Small & Large Male-Female, Small & Large Tongue & Groove, Ring Joint.
Dimension Standard	: ANSI B 16.5 DIN Standard, JIS Standard, BS 10 Etc. 12h#, 150#, 300#, 600#, 900#, 1500#, 2500#, 3000#, 5000# & 10000# Table D, E, F, H, ND 6, ND 10, ND 25, ND 16, ND 40, ND 64, ND 100 etc.
Stainless Steel	: ASTM A240, ASTM A 182 F304, F304L, 304H, 316, 316L, 316H, 316Ti, 321, 309, 310, 347, 904L etc.
Carbon Steel	: ASTM A105, IS 2002, IS 2062, A516 Gr. 70
Alloy Steel	: ASTM A182 F1, F5, F9, F11, F12, F22, F91
Size	: 1/4" NB to 48" NB

PRODUCT RANGE

FORGED FITTINGS :

Types	: 45° & 90° Elbow, Equal Tee & Un Equal Tee, Concentric & Eccentric Reducers, Union, Couplings, Caps, Cross, Bushing, Plugs, Hex Nipples, Swage Nipples, Barrel Nipples, Hose Nipples, Wedolet, Sockolet, Thredolet, Nipolat etc.
Class	: A1500#, 3000#, 6000# & 9000#
Size	: 1/4" NB to 4" NB (Socket Weld & Threaded)



BARS, RODS & WIRES :

Grade	: 304, 304L, 304H, 316, 316L, 316H, 316Ti, 321, 309, 310, 347, 409, 410, 420, 430, 904L etc.
Types	: Round, Square, Rectangular, Wire, Billet, Wiremesh, Ingot, Block, Forging etc.
ASTM	: SA 276, SA 314, SA 479, SA 482, SA 582
Sizes	: 0.5 mm to 300 mm
Finish	: Bright, Black & Polished
Nickel Alloys	: Monel, Inconel, Hast Alloy, Nickel, Supro Nickle Titanium, Duplex (2205, 2507) & 17 - 4PH



CRICLES, FLATS, RINGS & PROFILES :

Grade	: 304, 304L, 304H, 316, 316L, 316H, 316Ti, 321, 309, 310, 347, 409, 410, 420, 430, 904L etc.
Forms	: Forging & Plate Cut
Thickness	: 0.3 mm to 125 mm
Sizes	: As per Customer requirement.
Nickel Alloys	: Monel, Inconel, Hast Alloy, Nickel, Cupro Nickle, Titanium, Duplex, Super Duplex etc.



ANGLES & CHANNELS :

Grade	: 304, 304L, 304H, 316, 316L, 316H, 316Ti, 321, 309, 310, 347, 409, 410, 420, 430, 904L etc.
Thickness	: 3 mm to 16 mm
Sizes	: As per customer requirement.
Types	: Equal & unequal



FASTENERS :

Types	: Nuts, Bolts, Studs, Washers, Screws, Allen Caps, Clamps etc.
Form	: Cold Forge & Hot Forge in Form Of Hex, Square, Round, Half Thread, Full Thread (as Per Threading Gauge Reqd.)
Stainless Steel	: 304, 304L, 304H, 316, 316L, 316H, 316Ti, 321, 309, 310, 347, 904L etc.
Size	: M2 - M33, Length : 3mm to 200 mm
Nickel Alloys	: Model, Inconel, Hast Alloy, Nickel, Cupro Nickel, Titanium, Duplex, Super Duplex etc.



C.S./A.S./S.S. PIPE AND TUBES SCHEDULE DIMENSIONS, WALL THICKNESS, WT./MTR. (KG)

Diameter Tubi Size Pipe		Nominal Thickness and Weights Number of Schedule																															
		5S		10S		10		20		30		40		60		80		100		120		160		Standard		Extra-Strong							
		mm	kg./m	mm	kg./m	mm	kg./m	mm	kg./m	mm	kg./m	mm	kg./m	mm	kg./m	mm	kg./m	mm	kg./m	mm	kg./m	mm	kg./m	mm	kg./m	mm	kg./m	mm	kg./m				
3	1/8"	-	-	1.28	0.28	-	1.60	0.345	-	1.78	0.36	-	2.41	0.46	-	-	-	-	-	-	-	-	-	1.73	0.36	2.41	0.46						
6	1/4"	-	-	1.65	0.49	-	2.00	0.580	-	2.24	0.63	-	3.02	0.80	-	-	-	-	-	-	-	-	-	2.24	0.63	3.02	0.80						
10	3/8"	-	-	1.65	0.63	-	2.00	0.750	-	2.31	0.85	-	3.20	1.10	-	-	-	-	-	-	-	-	-	2.31	0.85	3.20	1.10						
15	1/2	1.65	0.80	2.11	1.00	-	2.0	0.957	-	2.77	1.26	-	3.73	1.62	-	-	-	-	-	-	-	-	4.78	1.95	2.77	1.26	3.73	1.62					
20	3/4	1.65	1.03	2.11	1.28	-	2.5	1.500	-	2.87	1.68	-	3.91	2.19	-	-	-	-	-	-	-	-	5.56	2.89	2.87	1.68	3.91	2.19					
25	1	1.65	1.29	2.77	2.08	-	2.5	1.916	-	3.38	2.50	-	4.55	3.23	-	-	-	-	-	-	-	-	6.35	4.23	3.38	2.50	4.55	3.23					
32	1 1/4	1.65	1.65	2.77	2.69	-	3.00	2.910	-	3.56	3.38	-	4.85	4.46	-	-	-	-	-	-	-	-	6.35	5.60	3.56	3.38	4.85	4.46					
40	1 1/2	1.65	1.90	2.77	3.12	-	3.0	3.370	-	3.08	4.05	-	5.08	5.40	-	-	-	-	-	-	-	-	7.14	7.23	3.68	4.05	5.08	5.40					
50	2	1.65	2.38	2.77	3.94	-	3.0	4.263	-	3.91	5.43	-	5.54	7.47	-	-	-	-	-	-	-	-	8.74	11.10	3.91	5.43	5.54	7.47					
65	2 1/2	2.11	3.70	3.05	5.26	-	4.00	6.846	-	5.16	8.62	-	7.01	11.40	-	-	-	-	-	-	-	-	9.52	14.90	5.16	8.62	7.01	11.40					
80	3	2.11	4.50	3.05	6.45	-	4.00	8.423	-	5.49	11.28	-	7.62	15.25	-	-	-	-	-	-	-	-	11.13	21.30	5.49	11.28	7.62	15.25					
90	3 1/2	2.11	5.20	3.05	7.40	-	4.5	10.838	-	5.74	13.56	-	8.08	18.62	-	-	-	-	-	-	-	-	-	-	-	-	-	-	-				
100	4	2.11	5.61	3.05	8.34	-	4.5	12.255	-	6.02	16.06	-	8.56	22.29	-	-	-	-	-	-	-	-	11.13	28.25	13.49	33.51	6.02	16.06	8.56	22.29			
125	5	2.77	9.45	3.40	11.56	-	5.00	16.900	-	6.55	21.76	-	9.53	31.97	-	-	-	-	-	-	-	-	12.70	40.24	15.88	49.05	6.55	21.76	9.52	30.92			
150	6	2.77	11.31	3.40	13.82	-	6.35	24.150	-	7.11	28.23	-	10.97	42.52	-	-	-	-	-	-	-	-	14.27	54.20	18.26	67.47	7.11	28.23	10.97	42.52			
200	8	2.77	14.78	3.76	19.94	-	6.35	33.28	7.04	38.76	8.18	42.49	10.31	53.07	12.70	64.57	15.09	75.79	18.26	90.32	23.01	111.18	8.18	42.49	12.70	64.57	15.09	75.79	18.26	90.32			
250	10	3.40	22.62	4.19	27.83	-	6.35	41.73	7.80	50.96	9.27	60.24	12.70	81.46	15.09	95.84	18.26	114.59	21.44	132.85	28.58	172.11	9.27	60.24	12.70	81.46	18.26	114.59	21.44	132.85			
300	12	3.96	33.00	4.57	36.00	-	6.35	49.68	8.38	65.14	9.52	73.88	14.27	108.97	17.48	131.81	21.44	159.67	25.40	186.75	33.32	238.60	9.52	73.76	12.70	97.86	21.44	159.67	25.40	186.75			
350	14	3.96	34.23	4.78	41.18	6.35	54.63	7.92	67.98	9.52	81.21	11.13	94.31	15.09	126.51	19.05	157.94	23.83	194.64	27.79	224.36	35.71	281.49	9.52	81.21	12.70	107.28	23.83	194.64	27.79	224.36		
400	16	4.19	41.60	4.78	47.33	6.35	62.58	7.92	77.92	9.52	93.13	12.70	123.18	16.66	160.04	21.44	203.26	26.19	245.34	30.96	286.33	40.49	364.94	9.52	93.13	12.70	123.18	26.19	245.34	30.96	286.33		
450	18	4.19	46.83	4.78	53.18	6.35	70.53	7.92	87.85	11.13	122.12	14.21	155.90	19.05	205.62	23.83	254.24	29.36	309.55	34.92	363.33	39.67	459.18	9.52	105.05	12.70	139.07	34.92	309.55	34.92	363.33		
500	20	4.78	59.22	5.54	68.50	6.35	78.47	9.52	116.97	12.70	154.97	15.09	183.14	20.92	247.79	26.19	310.91	32.54	381.20	38.10	441.06	44.45	564.24	9.52	116.97	12.70	154.97	32.54	381.20	38.10	441.06		
550	22	4.78	63.75	5.54	73.81	6.35	86.42	9.52	128.89	12.70	170.86	-	-	22.22	293.80	28.58	373.27	34.92	450.75	41.28	526.24	47.62	671.28	9.52	128.89	12.70	170.86	34.92	450.75	41.28	526.24		
600	24	5.54	82.60	6.35	94.37	6.35	94.37	9.52	140.81	14.27	209.54	17.48	254.74	24.61	354.62	30.96	441.30	38.89	546.84	46.02	639.18	52.37	806.74	9.52	140.81	12.70	202.75	38.89	546.84	46.02	639.18		
650	26	-	-	-	-	7.92	127.58	12.70	202.65	-	-	-	-	-	-	-	-	-	-	-	-	-	-	-	-	-	-	-	-	-	-	-	
700	28	-	-	-	-	7.92	137.52	12.70	218.54	15.88	271.94	-	-	-	-	-	-	-	-	-	-	-	-	-	-	-	-	-	-	-	-	-	-
750	30	-	-	-	-	7.92	147.45	12.70	234.44	15.88	219.81	-	-	-	-	-	-	-	-	-	-	-	-	-	-	-	-	-	-	-	-	-	-
800	32	-	-	-	-	7.92	157.39	12.70	250.33	15.88	311.67	17.48	342.17	-	-	-	-	-	-	-	-	-	-	-	-	-	-	-	-	-	-	-	-
850	34	-	-	-	-	7.92	157.32	12.70	266.22	15.88	331.54	17.48	364.01	-	-	-	-	-	-	-	-	-	-	-	-	-	-	-	-	-	-	-	-
900	36	-	-	-	-	7.92	177.26	12.70	282.12	15.88	351.41	19.05	420.21	-	-	-	-	-	-	-	-	-	-	-	-	-	-	-	-	-	-	-	-

MILD STEEL PIPE DIMENSIONS



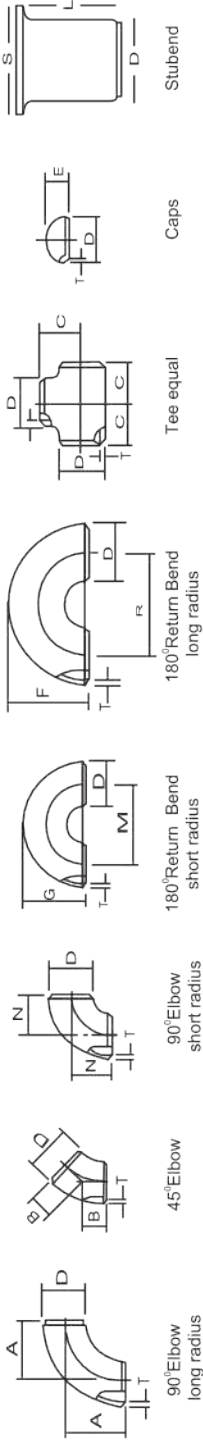
**MILD STEEL PIPE & TUBES DIMENSIONS CONFIRMING TO
IS : 1239 (PART -1) - 2004, EQUIVALENT TO BS-1387/1985**

Nominal Bore		Outside Diameter		Light (A-Class) Thickness Weight		Medium (B-Class) Thickness Weight		Heavy (C-Class) Thickness Weight	
Inch	mm	Inch	mm	mm	kg/mtr	mm	kg/mtr	mm	kg/mtr
1/8	3	0.406	10.32	1.80	0.361	2.00	-	2.65	0.493
1/4	6	0.532	13.49	1.80	0.517	2.35	0.407	2.90	0.769
3/8	10	0.872	17.10	1.80	0.674	2.35	0.852	2.90	1.02
1/2	15	0.844	21.43	2.00	0.952	2.65	1.1122	3.25	1.45
3/4	20	1.094	27.20	2.35	1.410	2.65	1.580	3.25	1.90
1	25	1.312	33.80	2.65	2.010	3.25	2.440	4.05	2.97
1¼	32	1.656	42.90	2.65	2.580	3.25	3.140	4.05	3.84
1½	40	1.906	48.40	2.90	3.250	3.25	3.610	4.05	4.43
2	50	2.375	60.30	2.90	4.110	3.65	5.100	4.47	6.17
2½	65	3.004	76.20	3.25	5.840	3.65	6.610	4.47	7.90
3	80	3.500	88.90	3.25	6.810	4.05	8.470	4.85	10.1
4	100	4.500	114.30	3.65	9.890	4.50	12.10	5.40	14.4
5	125	5.500	139.70	-	-	4.85	16.20	5.40	17.8
6	150	6.500	165.10	-	-	4.85	19.20	5.40	21.2

**BIG DIAMETER MILD STEEL PIPE ERW PIPES CONFIRMING TO
IS : 3589 GRADE FE330, GRADE FE410**

Wall Thick.	Nominal Bore 7"NB 193.7 mm OD	Nominal Bore 8"NB 219.1 mm OD	Nominal Bore 10"NB 273 mm OD	Nominal Bore 12"NB 323.7 mm OD	Nominal Bore 14" NB 355.6 mm OD	Nominal Bore 16"NB 406.4 mm OD	Nominal Bore 18" NB 457 mm OD	Nominal Bore 20"NB 508 mm OD
mm	Kg/mtr	Kg/mtr	Kg/mtr	Kg/mtr	Kg/mtr	Kg/mtr	Kg/mtr	Kg/mtr
4.85	22.59	25.62	32.07	38.13	-	-	-	-
5.20	24.17	27.43	34.34	40.85	-	-	-	-
5.60	26.00	29.28	36.93	43.93	48.11	-	-	-
6.00	27.88	31.53	39.50	47.02	51.49	61.00	69.00	-
6.35	29.34	33.28	41.73	49.67	54.43	62.35	70.50	78.50
7.01	32.77	36.76	46.43	55.45	61.82	69.04	-	-
7.04	-	41.00	50.95	61.85	67.98	77.94	87.80	-
8.18	-	42.56	53.42	65.12	-	-	-	-
9.53	-	51.50	60.24	73.75	81.21	93.13	105.00	117.00
12.70	-	-	-	-	107.28	123.30	139.00	155.00

BUTT WELDING PIPE FITTINGS DIMENSION STANDARD ANSI B-16.9, B-16.28



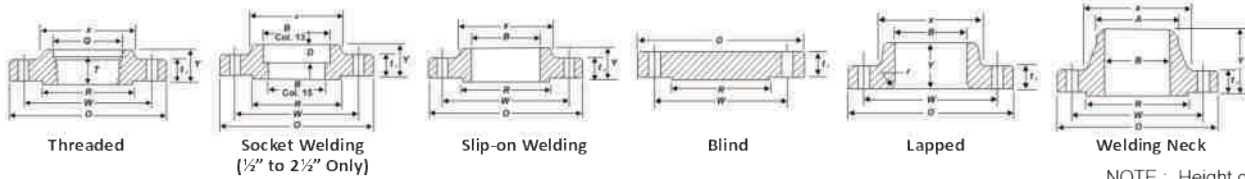
Non Bore	Pipe O.D.	Wall Thickness					Radius				A	B	C	E	G	L		H	D	h
		5 S	10 S	40 S	80 S	1D	1.5D	2D	3D	Short						Long				
1/2	21.34	1.65	2.11	2.77	3.73	12.7	19.05	25.4	38.1	12.7	15.9	25.4	25.4	34.9	50.8	76.2	50.8	45	8	
3/4	26.67	1.65	2.11	2.87	3.91	19.05	28.57	38.10	57.15	19.05	11.1	28.6	25.4	42.8	50.8	76.2	50.8	50	8	
1	33.40	1.65	2.77	3.38	4.55	25.4	38.1	50.8	76.2	25.4	22.2	38.1	38.1	50.8	50.8	101.6	50.8	60	10	
1 1/4	42.16	1.65	2.77	3.56	4.85	31.75	47.6	63.5	95.25	31.75	25.0	47.1	38.1	63.5	50.8	101.6	50.8	70	12	
1 1/2	48.26	1.65	2.77	3.68	5.08	38.1	57.15	76.2	114.3	38.10	28.6	57.2	38.1	73.0	50.8	101.6	63.5	80	12	
2	60.332	1.65	2.77	3.91	5.54	50.8	76.2	101.6	152.4	50.8	34.0	63.5	38.1	92.0	63.5	152.4	76.2	94	16	
2 1/2	73.02	2.11	3.05	5.16	7.01	63.5	95.25	127.0	190.5	63.5	44.0	76.2	38.1	104.8	63.5	152.4	88.9	110	16	
3	88.90	2.11	3.05	5.49	7.62	76.2	114.30	152.4	228.6	76.2	50.8	85.7	50.8	127.0	63.5	152.4	88.9	130	18	
3 1/2	101.60	2.11	3.05	5.74	8.08	88.9	133.35	177.8	266.7	88.9	57.2	95.3	63.5	139.7	76.2	152.4	101.6	140	18	
4	114.30	2.11	3.05	6.02	8.56	101.6	152.4	203.2	304.8	101.6	63.5	104.8	63.5	157.2	76.2	152.4	101.6	158	20	
5	141.30	2.77	3.40	6.55	9.52	127.0	190.5	254.0	381.0	127.0	82.6	123.8	76.2	185.7	76.2	203.2	127.0	188	25	
6	168.27	2.77	3.40	7.11	10.97	152.4	228.6	304.8	457.2	152.4	95.3	158.7	88.9	203.2	88.9	212.0	140.0			
8	219.07	2.77	3.76	8.18	12.7	203.2	304.8	406.4	609.6	203.2	127.0	190.5	101.6	270.0	101.6	203.2	152.4	268	30	
10	273.05	3.40	4.19	9.27	12.7	254.0	381.0	508.0	762.0	254.0	158.7	215.9	127.0	324.0	127.0	254.0	177.8	330	34	
12	323.85	3.96	4.57	9.52	12.7	304.8	457.2	609.6	914.4	304.8	190.5	254.4	152.4	381.0	152.4	254.0	203.2	400	40	
14	355.60	3.96	4.76	9.52	12.7	355.6	533.4	711.2	1066.8	355.6	222.2	280.0	165.1	412.8	152.4	305.0	330.2			
16	406.40	4.19	4.76	9.52	12.7	406.4	609.6	812.8	1219.2	496.4	254.0	304.8	177.8	470.0	152.4	305.0	355.6			
18	457.20	4.19	4.76	9.52	12.7	457.2	685.8	914.4	1371.6	457.2	285.7	343.0	203.2	533.4	152.4	305.0	381.0			
20	508.00	4.76	5.54	9.52	12.7	508.0	762.0	1066.8	1524.0	508.0	317.6	381.0	228.6	584.2	152.4	305.0	508.0			

Standards: All dimensions are in mm and confirm to ANSI B 16.9 and M.S.S. SP. - 43 where applicable - Dimensional tolerances are in accordance with ANSI B 16.9 and M.S.S. SP. - 43 where applicable.

Radius: Radius of short radius elbow is 1 times nominal pipe diameter. Radius of Long Radius Elbow is 1 1/2 times nominal pipe diameter.

Material of Construction: S.S. 304/304L/316/316L/321 Nickel 200 & Nickel alloys

DIMENSIONS OF CLASS 150 FLANGES



NOTE : Height of RF 2mm Extra.

Nominal Pipe Size NPS	Outside Diameter of Flange O	Thickness of Flange, Min., t1	Drilling				Hub Diameter Beginning of Chamfer Welding Neck A	Length Thru Hub			Bore			Comer Radius of Bore Lapped Flange and Pipe, R	Depth of Socket D	Diameter of RF, R		
			Thickness Lap Joint Min., t1	Diameter of Blot Circle W	Diameter of Blot Holes	Numbers of Blots		Diameter of Hub, X	Threaded / Slip-On / Socket Welding, Y	Lapped Y	Welding, Y	Threaded / Length Threaded Min. B	Slip-On / Socket Welding, Min. B				Lapped Min. B	Welding Neck / Socket Welding B (Note(2))
1/2	90	9.6	11.2	60.3	15.9	4	30	21.3	14	16	46	16	22.2	22.9	15.8	3	10	34.9
3/4	100	11.2	12.7	69.9	15.9	4	38	26.7	14	16	51	16	27.7	28.2	20.9	3	11	42.9
1	110	12.7	14.3	79.4	15.9	4	49	33.4	16	17	54	17	34.5	34.9	26.6	3	13	50.8
1 1/4	115	14.3	15.9	88.9	15.9	4	59	42.2	19	21	56	21	43.2	43.7	35.1	5	14	63.5
1 1/2	125	15.9	17.5	98.4	15.9	4	65	48.3	21	22	60	22	49.5	50.0	40.9	6	16	73.0
2	150	17.5	19.1	120.7	19.1	4	78	60.3	24	25	62	25	61.9	62.5	52.5	8	17	92.1
2 1/2	180	20.7	22.3	139.7	19.1	4	90	73.0	27	29	68	29	74.6	75.4	62.7	8	19	104.8
3	190	22.3	23.9	152.4	19.1	4	108	88.9	29	30	68	30	90.7	91.4	77.9	10	21	127.0
3 1/2	215	22.3	23.9	177.8	19.1	8	122	101.6	30	32	70	32	103.4	104.1	90.1	10	-	139.7
4	230	22.3	23.9	190.5	19.1	8	135	114.3	32	33	75	33	116.1	116.8	102.9	11	-	157.2
5	255	22.3	23.9	215.9	22.3	8	164	141.3	35	36	87	36	143.8	144.4	128.2	11	-	185.7
6	280	23.9	25.4	241.3	22.3	8	192	168.3	38	40	87	40	170.7	171.4	154.1	13	-	215.9
8	345	27.0	28.6	298.2	22.3	8	246	219.1	43	44	100	44	221.5	222.2	202.7	13	-	269.9
10	405	28.6	30.2	362.0	25.4	12	315	273.0	48	49	100	49	276.2	277.4	254.6	13	-	323.8
12	485	30.2	31.8	431.8	25.4	12	365	323.8	54	55	113	55	327.0	328.2	304.8	13	-	381.0
14	535	33.4	35.0	476.3	28.6	12	400	355.6	56	79	125	57	359.2	360.2	To be Specified by Purchaser	13	-	412.8
16	595	35.0	36.6	539.8	28.6	16	457	406.4	62	87	125	64	410.5	411.2	-	13	-	469.9
18	635	38.1	39.7	577.9	31.8	16	505	457.0	67	97	138	68	461.8	462.3	-	13	-	533.4
20	700	41.3	42.9	635.0	31.8	20	559	508.0	71	103	143	73	513.1	514.4	-	13	-	584.2
24	815	46.1	47.7	749.3	35.0	20	663	610.0	81	111	151	83	616.0	616.0	-	13	-	692.2

DIMENSIONS OF CLASS 300 FLANGES

NOTE : Height of RF 2mm Extra.

Nominal Pipe Size NPS	Outside Diameter of Flange O	Thickness of Flange, Min., t1	Drilling				Hub Diameter Beginning of Chamfer Welding Neck A	Length Thru Hub			Bore			Comer Radius of Bore Lapped Flange and Pipe, R	Depth of Socket D	Diameter of RF, R		
			Thickness Lap Joint Min., t1	Diameter of Blot Circle W	Diameter of Blot Holes	Numbers of Blots		Diameter of Hub, X	Threaded / Slip-On / Socket Welding, Y	Lapped Y	Welding, Y	Threaded / Length Threaded Min. B	Slip-On / Socket Welding, Min. B				Lapped Min. B	Welding Neck / Socket Welding B (Note(2))
1/2	95	12.7	14.3	66.7	15.9	4	38	21.3	21	22	51	16	22.2	22.9	15.8	3	10	34.9
3/4	115	14.9	15.9	82.6	19.1	4	48	26.7	24	25	56	16	27.7	28.2	20.9	3	11	42.9
1	125	15.9	17.5	88.9	19.1	4	54	33.4	25	27	60	18	34.5	34.9	26.6	3	13	50.8
1 1/4	135	17.5	19.1	98.4	19.1	4	64	42.2	25	27	64	21	43.2	43.7	35.1	5	14	63.5
1 1/2	155	19.1	20.7	114.3	22.2	4	70	48.3	29	30	67	23	49.5	50.2	40.9	6	16	73.0
2	165	20.7	22.3	127.0	19.0	4	84	60.3	32	33	68	29	61.9	62.5	52.5	8	17	92.1
2 1/2	190	23.9	25.4	149.2	22.3	4	100	73.0	37	38	75	32	74.6	75.4	62.7	8	19	104.8
3	210	27.0	28.6	168.3	22.3	4	117	88.9	41	43	78	32	90.7	91.4	77.9	10	21	127.0
3 1/2	230	28.6	30.2	184.2	22.3	8	133	101.6	43	44	79	37	103.4	104.1	90.1	10	-	139.7
4	255	30.2	31.8	200.0	22.3	8	146	114.3	46	48	84	37	116.1	116.1	102.3	11	-	157.2
5	280	33.4	35.0	235.0	22.3	8	178	141.3	49	51	97	43	143.8	144.4	128.2	11	-	185.7
6	320	35.0	36.6	269.9	22.3	8	206	168.3	51	52	97	47	170.7	171.4	154.1	13	-	215.9
8	380	39.7	41.3	330.2	25.4	8	260	219.1	60	62	110	51	221.5	222.2	202.7	13	-	269.9
10	445	46.1	47.7	387.4	28.6	12	321	273.0	65	95	116	56	276.2	277.4	254.6	13	-	323.8
12	520	49.3	50.8	450.8	31.8	12	375	323.8	71	102	129	61	327.0	328.2	304.8	13	-	381.0
14	585	52.4	54.0	514.4	31.8	12	425	355.6	75	111	141	64	359.2	360.2	To be Specified by Purchaser	13	-	412.8
16	650	55.6	57.2	571.5	35.0	16	483	406.4	81	121	144	69	410.5	411.2	-	13	-	469.9
18	710	58.8	60.4	628.6	35.0	16	533	457.0	87	130	157	70	461.8	462.3	-	13	-	533.4
20	775	62.0	63.5	685.8	35.0	20	587	508.0	94	140	160	74	513.1	514.4	-	13	-	584.2
24	915	68.3	69.9	812.8	41.3	20	702	610.0	105	152	167	83	616.0	616.0	-	13	-	692.2

NOTE : Dimensions column 16 Correspond to the inside diameters of pipe as given in ASME B36.10M for Standard Wall Pipe, Thickness of Standard Wall is the same as Schedule 40 in Size NPS 10 and smaller. These bore size are furnished unless Otherwise specified by the Purchaser.

DIMENSIONS OF MS ANGLE, CHANNEL & BEAMS

M.S. ANGLES

M.S. CHANNELS

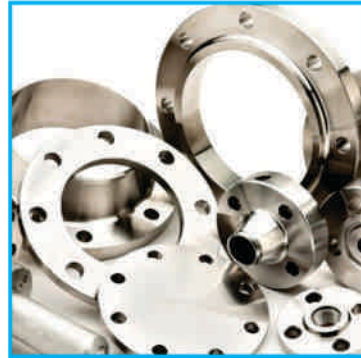
Size in mm	Weight in kgs. per foot	Weight in kgs. per Mtr.	Size in mm	Weight in kgs. per foot	Weight in kgs. Per Mtr.				
20X20X3	0.274	0.899	75x40	2.172	7.126				
25X25X3	0.335	1.099	100x50	2.925	9.597				
25X25X5	0.548	1.800	125x65	3.992	13.098				
31X31X3	0.390	1.280	150x75	5.120	16.799				
35X35X5	0.792	2.599	175x75	5.973	19.597				
37X37X3	0.518	1.700	200x75	6.796	22.298				
40X40X3	0.548	1.798	250x80	9.326	30.599				
40X40X5	0.915	3.002	300x90	11.063	36.298				
40X40X6	1.066	3.498	400x400	19.270	50.300				
50X50X5	1.158	3.799	150x150x10	6.950	22.803				
50X50X6	1.372	4.502	150x150x12	8.290	27.199				
60X60X6	1.645	5.397	150x150x16	10.911	35.799				
65X65X6	1.767	5.798	150x150x20	13.441	44.100				
			M.S. BEAMS						
65X65X8	2.346	7.697	100x50	2.712	8.900				
65X65X10	2.864	9.400	125x75	4.053	13.300				
75X75X6	2.072	6.798	150x75	4.571	14.997				
75X75X8	2.712	8.898	175x85	5.943	19.499				
75X75X10	2.072	10.998	200x100	7.893	25.897				
80X80X8	2.925	9.597	250x125	11.612	38.099				
90X90X6	2.499	8.199	300x140	14.782	48.500				
90X90X8	3.292	10.801	350x140	16.125	52.906				
90X90X10	4.084	13.400	400x140	19.080	62.601				
100X100X6	2.804	9.200	450x150	22.280	73.100				
100X100X8	3.687	12.097	500x180	26.730	87.700				
100X100X10	4.545	14.912	600x210	37.370	122.600				
100X100X12	5.395	17.701							
110X110X2	5.973	19.600	CHEQUERED PLATES GALVANISED SHEETS						
130X130X10	5.973	19.600	Size in mm	Weight in kgs. per Sq. / Ft.	Weight in kgs. per Sq. / Mt.	Gauge	MM	Weight in kgs. per Sq. / Ft.	Weight in kgs. per Sq. / Mt.
			5	4.210	45.300	16	1.60	1.170	12.596
			6	4.942	53.200	18	1.20	0.936	10.072
			8	6.400	68.900	20	0.91	0.760	8.070
			10	7.860	84.600	22	0.71	0.606	6.527
			12	9.318	100.300	24	0.63	0.490	5.277
						26	0.50	0.396	4.267
						28	0.40	0.324	3.486
						30	0.31	0.266	2.866



PIPES



FITTINGS



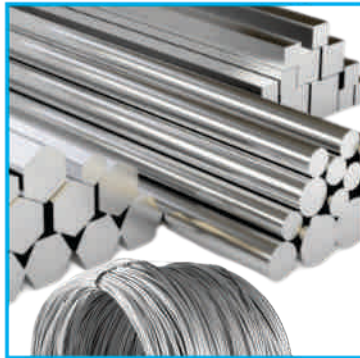
FLANGES



PLATES



SHEETS/COILS



BARS



FASTENERS



ANGLES/CHANNELS

APPLICATIONS WE SERVE

- Turnkey Projects, Furniture & Interior Designing
- Heat Exchangers
- Cement Plant
- Chemicals & Pharmaceuticals
- Water Treatment Plant
- Power Plant
- Dairy Plant
- Oil, Petrochemical & Refineries
- Atomic Energy, Space Research & Defence

FORMULA OF WEIGHT

WEIGHT OF STAINLESS STEEL PIPES & TUBES

O.D. (mm) - W.T. (mm) X W.T. (mm) X 0.02466 = kg. per Meter
O.D. (mm) - W.T. (mm) X W.T. (mm) X 0.00756 = kg. per Feet

WEIGHT OF STAINLESS STEEL ROUNDS

Dia (mm) X Dia (mm) X 0.00623 = Kg. Per Meter
Dia (mm) X Dia (mm) X 0.0019 = Kg. Per Feet

WEIGHT OF STAINLESS STEEL SQUARE BARS

Dia (mm) X Dia (mm) X 0.00787 = Kg. Per Meter
Dia (mm) X Dia (mm) X 0.0024 = Kg. Per Feet

WEIGHT OF STAINLESS STEEL HEXAGONAL RODS

Dia (mm) X Dia (mm) X 0.00680 = Kg. Per Meter
Dia (mm) X Dia (mm) X 0.002072 = Kg. Per Feet

WEIGHT OF STAINLESS STEEL FLAT BAR

Width (mm) X Thk (mm) X 0.00798 = kg. Per Meter
Width (mm) X Thk (mm) X 0.00243 = kg. Per Feet

WEIGHT OF STAINLESS STEEL SHEETS

Length (Mtr.) X Width (Mtr.) X Thk (mm) x 8 = kg. per Sheet
Length (Ft.) X Width (Ft.) X Thk (mm) x 3/4 = kg. per Sheet

WEIGHT OF STAINLESS STEEL CIRCLES & BLANKS

Dia (mm) X Dia (mm) X Thk. (mm)/160 = Gmg. Per Pcs.
Dia (mm) X Dia (mm) X Thk. (mm) X 0.0000063 = Kg. Per Pcs.

WEIGHT OF BRASS/COPPER PIPES

Length (mm) x W.T. (mm) X W.T. (mm) X 0.0260 = Kg. Per Meter

WEIGHT OF CARBON STEEL SHEETS - PLATES

Length (Mtr.) x Width (Mtr.) X Thk (mm) X 7.85 = Kg. Per Sheet

WEIGHT OF LEAD PIPES (APPRO.)

O.D. (mm) - W.T. (mm) X W.T. (mm) X 0.0345 = Kg. Per Meter

WEIGHT OF ALUMINIUM PIPES (APPRO.)

O.D. (mm) - W.T. (mm) X W.T. (mm) X 0.0082 = Kg. Per Meter

WEIGHT OF LEAD SHEETS (APPRO.)

Length (mtr.) x Width (mtr.) X Thk. (mm) X 11.2 = Kg. Per Sheet

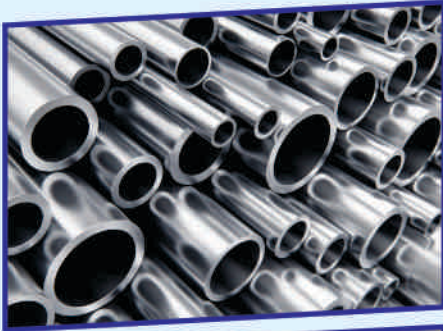
WEIGHT OF ALUMINIUM SHEETS (APPRO.)

Length (Mtr.) x width (Mtr.) X Thk. (mm) X 2.69 = Kg. Per Sheet

TENSILE STRENGTH CONVERSION TABLE

1)	Kg/mm ² X 9.81	= N/mm ² =MPa
2)	Psi X 0.0007	= Kg/mm ²
3)	KSi X 1000	= PSi
4)	Kg/mm ² X 1.422	= KSi

- ▶ Stainless Steel
- ▶ Mild Steel
- ▶ Carbon Steel
- ▶ Alloys Steel
- ▶ Brass
- ▶ Copper
- ▶ Aluminum
- ▶ Fittings & Flanges
- ▶ Pipes & Tubes
- ▶ Sheet, Plate & Coils
- ▶ Round, Square & Hex Bar
- ▶ Wire Bar (Soft & Half Hard)
- ▶ Circle, Ring & Profile
- ▶ Perforated Sheet
- ▶ Wire Mesh
- ▶ Valves
- ▶ Hardware



“Quality, affordability, and efficiency are the three pillars of our business philosophy, ensuring our customers always receive the best experience”



ASEC **Aartech Steel**
ENGINEERING CO

CORPORATE OFFICE:

Shed No. 30, Aartech Steel House,
Adarsh Ind. Estate, Opp. Gravity kanta,
Chakudia Mahadev Road, Rakhial,
Ahmedabad - 380 023

Mob.: +91 9727 657146

Email: aartechsteel@gmail.com
info@aartechsteel.com

Web.: www.aartechsteel.com

MUMBAI HEAD OFFICE:

Shop No. 10, Ground Floor, Hakim Chawl MNST
124-144, Opp. Daulat Complex, P.B. Marg,
Mumbai - 400 008.

Tel.: +91 022 6615 7083 / 84

Mahesh Choudhary +91 98922 47717

Email: grasimmetal26@gmail.com